

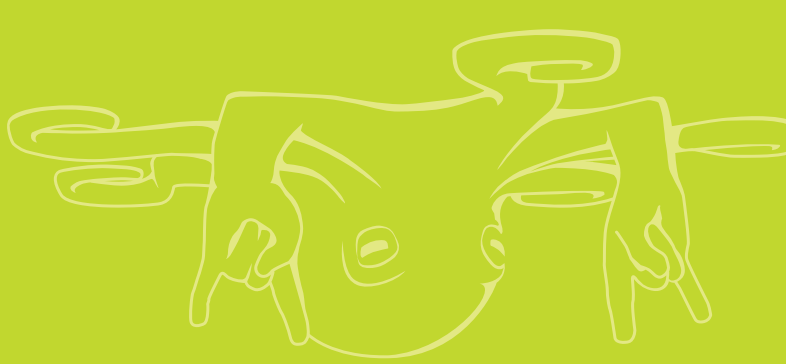
DUAL EXTRUDER TOOL HEAD



DUAL EXTRUDER TOOL HEAD

Two Extruders. Infinite possibilities.

- 3D print two-color models
- The second extruder can be used for support materials like HIPS and PVA
- Combine the properties of two different materials in a single print
- Max. printing temperature 300°C (572°F)

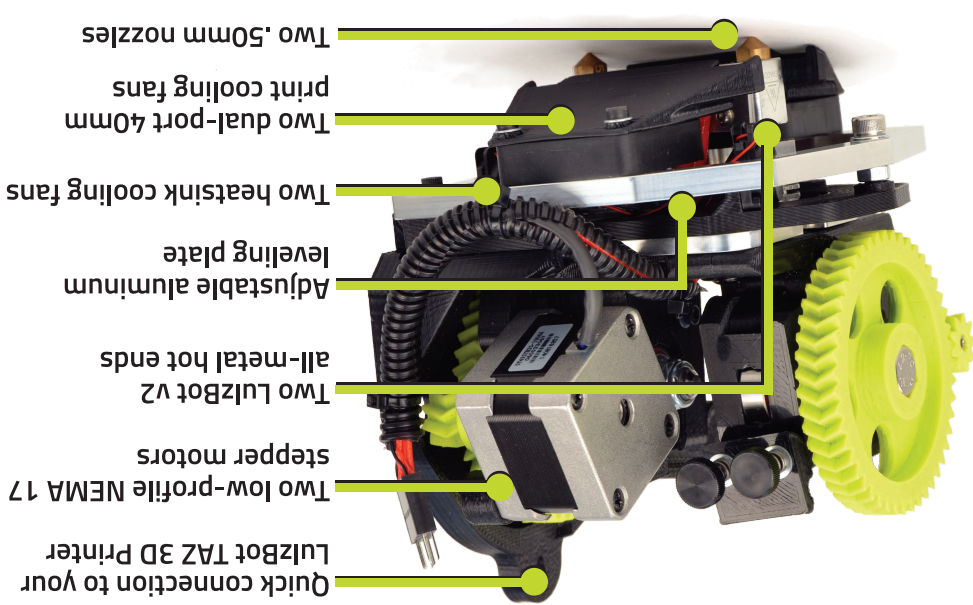


FREE SOFTWARE
LIBRE INNOVATION
OPEN SOURCE HARDWARE

FREE SOFTWARE
LIBRE INNOVATION
OPEN SOURCE HARDWARE

- 3D print two-color models
- Use the second extruder for dedicated support materials like HIPS and PVA
- Experiment by combining the properties of two different materials in a single print
- Max. printing temperature 300°C (572°F)

Two Extruders. Infinite possibilities.



- Quick connection to your LulzBot TAZ 3D Printer
- Two low-profile NEMA 17 stepper motors
- Two LulzBot v2 all-metal hot ends
- Adjustable aluminum leveling plate
- Two heatsink cooling fans
- Two dual-port 40mm print cooling fans
- Two .50mm nozzles



This packaging was designed with Free Software. All photos, graphics, and text are licensed CC BY-SA 4.0 International by Alph Objects, Inc.



Part No: KT-CP0089

- In the Box:**
- LulzBot TAZ Dual Extruder Tool Head v2
 - Secondary wire harness
 - Secondary spool arm
 - Secondary filament guide tube
 - Aluminum bed clips
 - All fasteners needed for installation
 - Two (2) sample lengths of ABS filament
- Not Included:**
- LulzBot TAZ Desktop 3D Printer
 - Metric hex keys (2.5mm, 3mm, 4mm)
 - Scissors or wire cutters
- Printer Compatibility:**
- LulzBot TAZ 6
 - LulzBot TAZ 5 with .50mm Nozzle
- Please see the Dual Extruder product page at LulzBot.com for information regarding use with earlier generation TAZ 3D printers.

DUAL EXTRUDER TOOL HEAD



Tool head for LulzBot TAZ 3D printers enabling the use of two materials in a single print